



Connection and Login Instructions

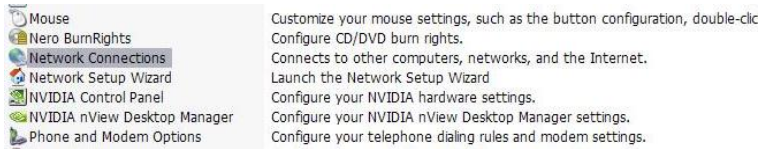
Connecting to a wireless network using Windows XP:

Click on the  button

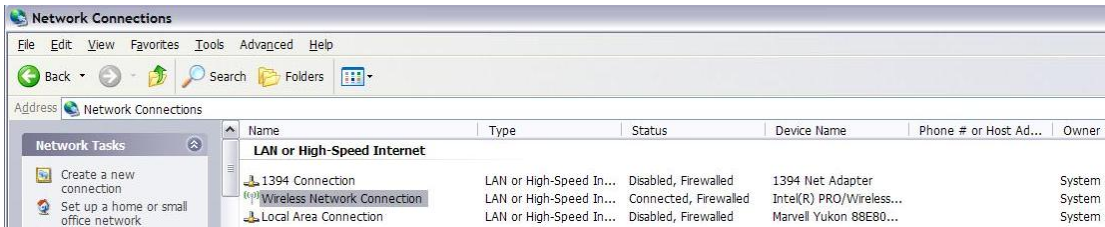
Select Control Panel:



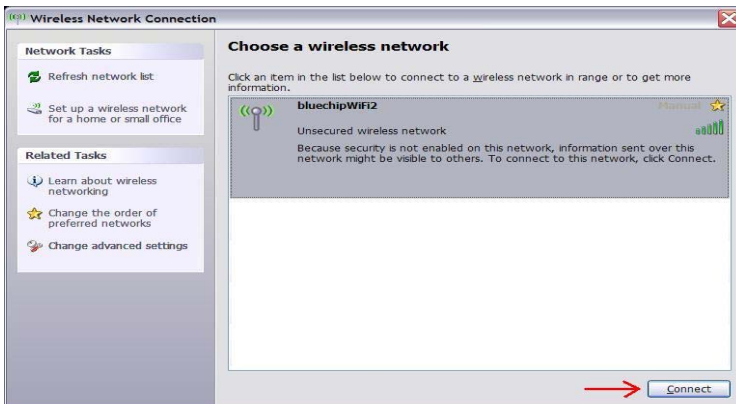
Double click on Network Connections:



Double click on Wireless Network Connection:



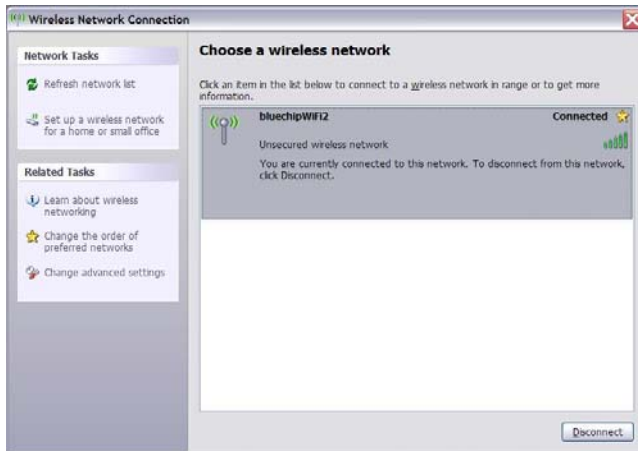
Look for the **bluechip** wireless connection. Select it and then click the Connect button:



You may receive a warning. You are receiving this because you are connecting to an open public network. Click Connect Anyway to continue:



You will now be connected to the bluechip wireless network. If this is successful you will see the following on-screen messages:



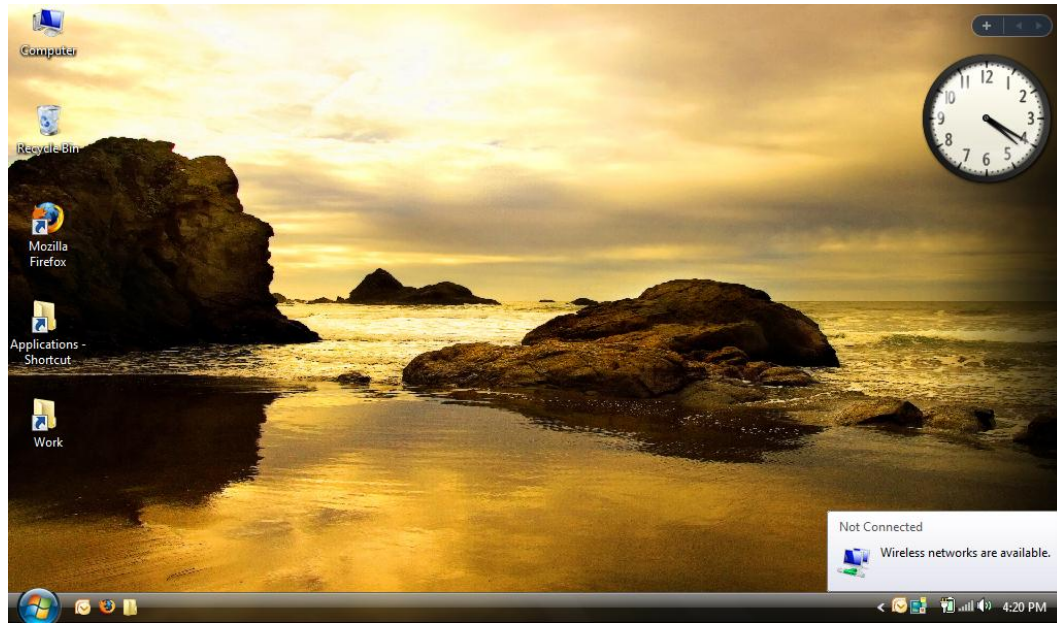
And in the bottom right hand corner of your screen:




If for some reason this fails then please see the troubleshooting document.

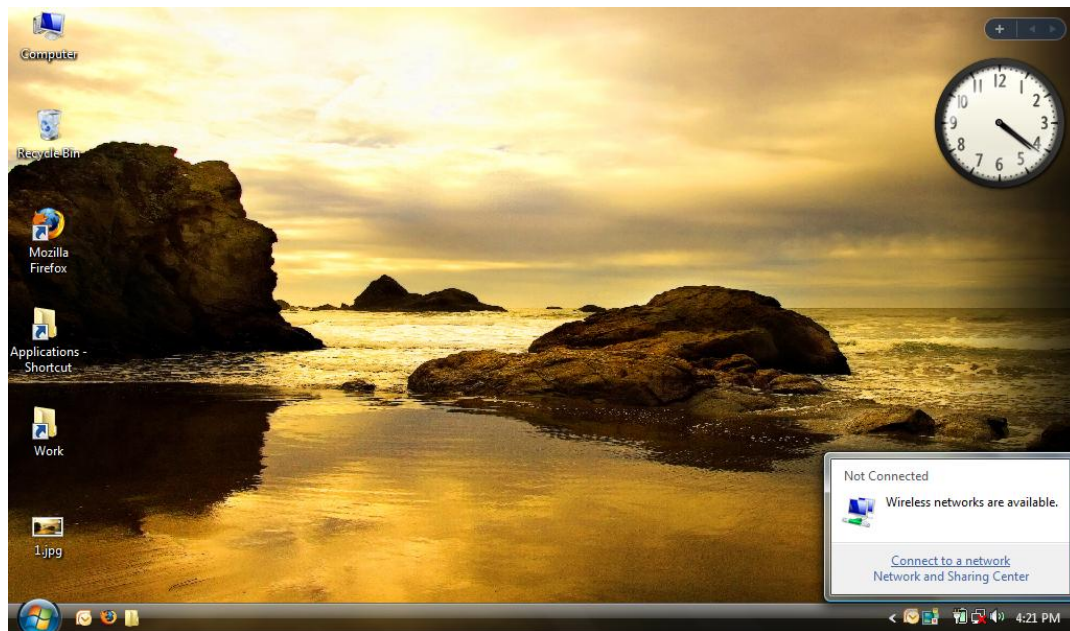
Connecting to a wireless network using Windows Vista:

Vista will detect that you are near a wireless network and display the message “Wireless networks are available”

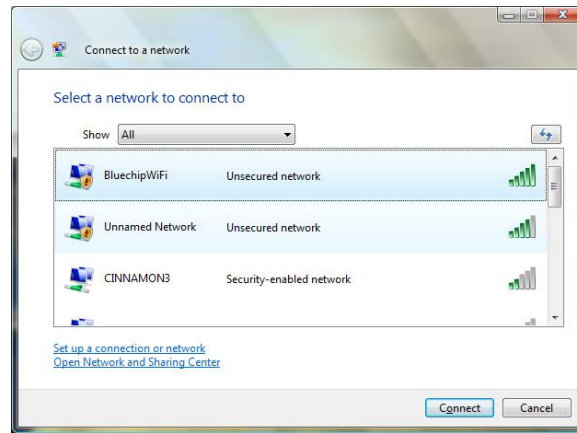


Double click on the wireless icon in the bottom right hand corner 

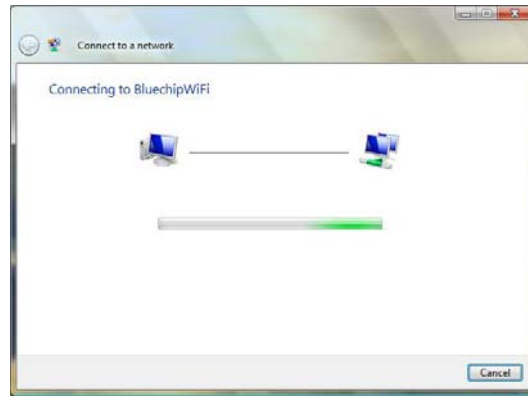
Then click "Connect to a network"



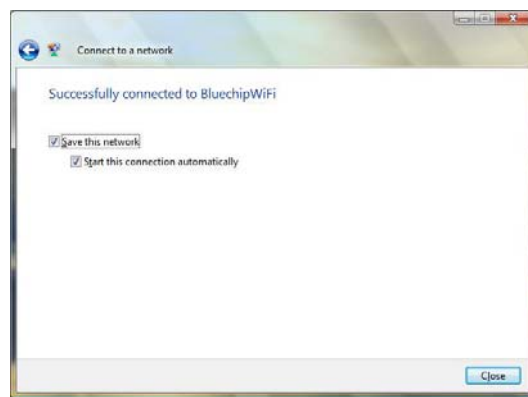
You will be presented with a list of wireless networks, Select BluechipWiFi or any of its derivatives:



You will then see this connecting screen:



When you have connected successfully you will see this screen:



It is a good idea to select both “Save this network” and “Start this connection automatically”

The next step is for you to login to the system using your internet browser.

Logging in to the bluechip system:

Please note: all usernames and passwords are always lower-case format

The next step is to start up your Internet Browser. We recommend using the latest version of Internet Explorer or Mozilla Firefox. Start your browser, you will be presented with our login screen:



Here you have 4 choices:

Airtime Card - This is for login with our prepaid cards available from our outlets

Buy Minutes Online – Buy minutes online using your credit card through PayPal

Samui Resident Login – This is for long stay Samui residents / Villa rentals

FREE TRIAL – Test the speed and reliability of our system with a Free 10 minute trial!



If you are a Samui Resident or you are staying in a Villa where the owners have paid for a monthly resident account, then please select the “Samui Resident Login”

If you have any problems, then please do not hesitate to contact us. Tel: +66 (0)89 65 100 20